



Volume 18 Edition 1
July 20, 2009

THE EHRHARDT EAGLE'S NEST

John Ehrhardt Elementary School
8900 Old Creek Drive
Elk Grove, CA. 95758
(916) 684-7259

Website: www.egusd.net/ehrhardt
Mr. Steve Brenizer, Principal
Ms. Ann Marie Bronte, Vice-Principal

Principal's Message

Dear Parents,

Welcome back! We are off to the start of another great school year. As with every year, our school is only a great as the partnerships we form between home and school. Please help us by following guidelines for daily homework and safety. There are numerous ways to volunteer time at our school. Information about these opportunities will be presented by your child's teacher at Back to School Night.

Back to School Night – For tracks **B, C and D: July 23**. For track **A: August 20**. The evening starts at 5:30 with a general session for all parents in the Multipurpose Room. There will also be tables set up where people from many of the groups that provide services to our school will be stationed and ready to answer questions.

There will be two classroom sessions for both primary and intermediate classes. The first one will be at 6:00 – 6:40. The second session will be from 6:50 – 7:30. The final half hour is for time again at the information booths, library or computer labs.

Attendance – Attendance is very important. Please develop the habits from the start to ensure your child is on time and present each day. Your child will be proud when they are the one there to receive the recognition for their, and your, efforts.

Entry assessments – Teachers administer entry assessments during the first two weeks of school to enable them to develop a view of the individual needs in their class. Please make sure your child is present each day so they do not miss this important start to the year.

Communication Day: Tuesday – Please watch for important notices to come home every Tuesday, which is our school's established day for communication. This will allow you to focus one time per week on checking the back pack to ensure you get notes intended for you, as parents, to read and respond.

Enrollment – Each year enrollment procedures are impacted by a number of factors. Every elementary school has to operate within a bigger picture of what is

happening across the Elk Grove Unified School District. We do our best to make the process as accommodating to families as possible. There are occasions when, even after school has started, we have to make changes that impact where students are placed. We will avoid this as much as possible. In the event that we must make those changes, we ask for your understanding, patience and cooperation with our staff who are doing their very best to help.

Regional Parent Meetings - K-12 regional parent meeting will continue this year. We will be forming regional meetings that allow our advisories within the region to work collaboratively to develop services to students. Parent advisories such as GATE, English Language Learners (ELAC), Honors programs, Safety and others will meet with school administration/staff to address needs and concerns. We will be providing a calendar early in the new school year and send it to parents.

The Economy – The statewide budget situation has impacted education significantly. There are programs and resources which no longer have funding. However, the good news is that we maintain a highly qualified teaching staff ready to face the challenges and deliver a solid educational program to students at Ehrhardt. We will also ensure that basic materials needed for learning are supplied for every student. However, teachers may inform you of items that would enhance learning and would be good things to include in your shopping plans for your child as we start school, or items that would be useful donations to the class as a whole. Whatever you can do to help in these areas will be greatly appreciated.

Our thanks go out to the businesses in our community that have recognized the situation we face in public education and have responded with donations and services. More than ever, "it takes a village".

Sincerely,

Steve Brenizer
Principal

PROJECT WISDOM— Choose to Plan

PTO CORNER

Your 2009/2010 PTO (Parent Teacher Organization) would like to welcome you back for another exciting and fun-filled year at John Ehrhardt Elementary School. We have many activities planned for this year starting with our always popular **"Burger N Books" on Friday, September 18th**. Our Lunch on the Quad will take place on **Friday September 25th**.

Here are a few questions and answers you may have been curious about regarding our PTO.

What is the difference in PTO versus PTA (Parent Teacher Association)?

By being a PTO (a stand alone organization not affiliate with the association) means all fund-raising we do will stay with our students at our school.

Where does the money raised go?

PTO assists in paying for student planners for every student in grades 3-6. Time 4Kids, Teacher Appreciation Luncheon, Accelerated Reader, fieldtrip scholarships for students and much more.

How do you raise monies?

PTO sponsors several events throughout the school year. Our first major fundraiser is Burgers N Books. Other events include Movie Night, Sweetheart Dance, Damsels and Dragons Social and the very well attended Spring Carnival this past May.

What does it cost to become a PRO Supporter?

A minimum monetary donation of five dollars (\$5.00) can help PTO go a long way as we prepare for a new school year.

With the current economy, I cannot donate money. May I still become a PTO Supporter?

Yes!! To make this a successful year, the PTO needs supports from all families within the John Ehrhardt student body. For the third year, in lieu of the \$5 financial donation, you can volunteer a minimum of two (2) hours of your time at any PTO sponsored activity.

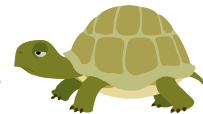
How do I find out more information about PTO and volunteer opportunities?

*Check out our booth at **Back 2 School Night** (July 23 for B/C/D track or August 20 for A track)*

Finally, a very important PTO role is to build a sense of community among parents, students, teachers, and staff at the school. We are all working together to aid in the success of our students!

John Ehrhardt Pet Policy

We all enjoy pets, but some children have NOT been around them much. Children who are not accustomed to animals are sometimes alarmed or don't know how to act in a safe manner around them. Also, animals can become alarmed by sudden movements, reacting in out-of-the-ordinary ways when placed in unfamiliar situations or around large groups. The school cannot take responsibility for controlling and monitoring pets and the possible impact their presence on campus may have with students. Pets add a dynamic that can trigger excitement or and emotional reaction with a child which carries through the day, causing a significant distraction/disruption to the educational purpose of the school. The school's policy on pets respects both the needs of pet owners while taking into consideration the needs of students and those who do not own animals.



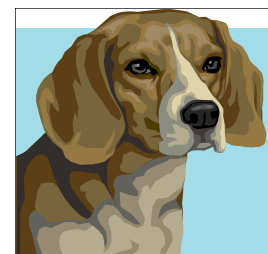
Please **help us by supporting the following:**

- **No pets on the interior of the campus:** blacktop and playground areas, quad, or



Office. Please stop at the fence line of the school if you have a dog with you when dropping off/picking up student(s).

- Speak with your child's teacher before bringing any pet to the classroom for sharing or demonstration.
- Make sure all pets are properly crated and restrained when bringing them for classroom demonstrations.



CCSP Committee

The safety and security of students is one of the prime objectives of the school. Everyone—parents, guardians, staff, students, and community members—to help assure that our students attend school in a safe and productive environment.

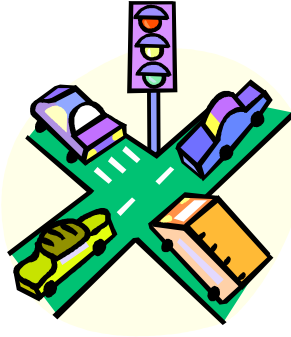
This year traffic flow through the parking lots has been changed to promote an easier drop off/pick up for all. Please refer to page 4 for a detailed explanation.

The following enhancements continue:

- **Three gates** are secured during the day—the double chain-link gates onto the playground, the Case Park gate, and the large blue gate near the Kindergarten classrooms.
- **Traffic flow signs**—please follow the signs to help guide the flow of cars SAFELY around the site.
- **AM/PM supervision by staff**—staff members provide safe crossings for students at the three crosswalks and monitor drop-off and pick-up areas. Please observe and follow directions given to provide safety for all as well as setting a good example for your student(s).



The School's Safety Committee meets once a trimester. To learn more about committee meetings, please contact the Office and ask for the Vice-Principal.



Safety Reminders:

- School begins at 7:50—students are to be on line, ready to go at this time!
- Observe the traffic flow signs and crossing guards around the school.
 - Do **NOT** make a U-turn in the middle of the street. On the west side of the campus, continue to the stop sign at Laguna Park and Old Creek. Then make three left turns & you will be able to turn onto Laguna Park going south in a very safe manner.
 - Do **NOT** allow/encourage your child/ren to cross mid-block (e.g. “jaywalk”). It is highly dangerous and adult supervisors will ask your students not to cross.
- When visiting the campus, be sure to stop in the Office to sign-in.
- Dismissal is at 2:07 p.m. Students need to clear campus in a timely manner. Remind your student (s) to go directly home after school and report in to an adult.

UNSCHEDULED MINIMUM DAYS 2009-2010

Trimester 1:

Monday, September 21/Track D
Monday, October 19/Tracks A/B/C

Trimester 2:

Monday, January 25/Track D
Monday, February 22 /Tracks A/B/C

Trimester 3:

Monday, May 17 /Track D
Monday, June 14/Tracks A/B/C




Attendance Figures June 2009

Overall school — 96.16%

- Track A — 95.55%
- Track B — 96.29%
- Track C — 96.65%

New for 09-10! What I Need (WIN) Time


MARK YOUR CALDENDARS!
REMEMBER-TUESDAY IS "COMMUNICATION DAY" @ EHRHARDT

In a district as diverse as Elk Grove Unified School District, there are many needs to be met to serve our students. Those needs include providing approximately 30 minutes of English Language Development (ELD) to students who are developing their proficiency with speaking, reading, and writing English. Additionally, the need includes offering support to those who are fluent English speakers who could use additional support in an academic area.

During this bloc of time, there will be supplemental instruction given to all English only students. In some cases students might need support in areas of math, reading comprehension, vocabulary development, writing skills etc. There is always the possibility that your student might need advanced support in an academic area.

Once the area of need is determined, all English Learners as well as English only students, will be grouped to meet the individual needs of the student. This 30 minute block of time will in no way impede upon the core curriculum (reading, mathematics, physical education, science, or social science) which will continue to be taught during the school day.

At John Ehrhardt, this bloc of time is known as **WIN Time**. "WIN" stands for "What I Need". All students participate in this 30 minutes of instruction either in English Language Development or in support of a curricular area. When WIN Time occurs during your child's day is dependant on his/her grade level. Your child's teacher can offer further explanation about the specific support which will be offered. Elk Grove Unified School District is proud to provide individualized instruction to meet the needs of all students.

Should you have any questions, please feel free to contact your child's teacher or the principal, Mr. Brenizer.

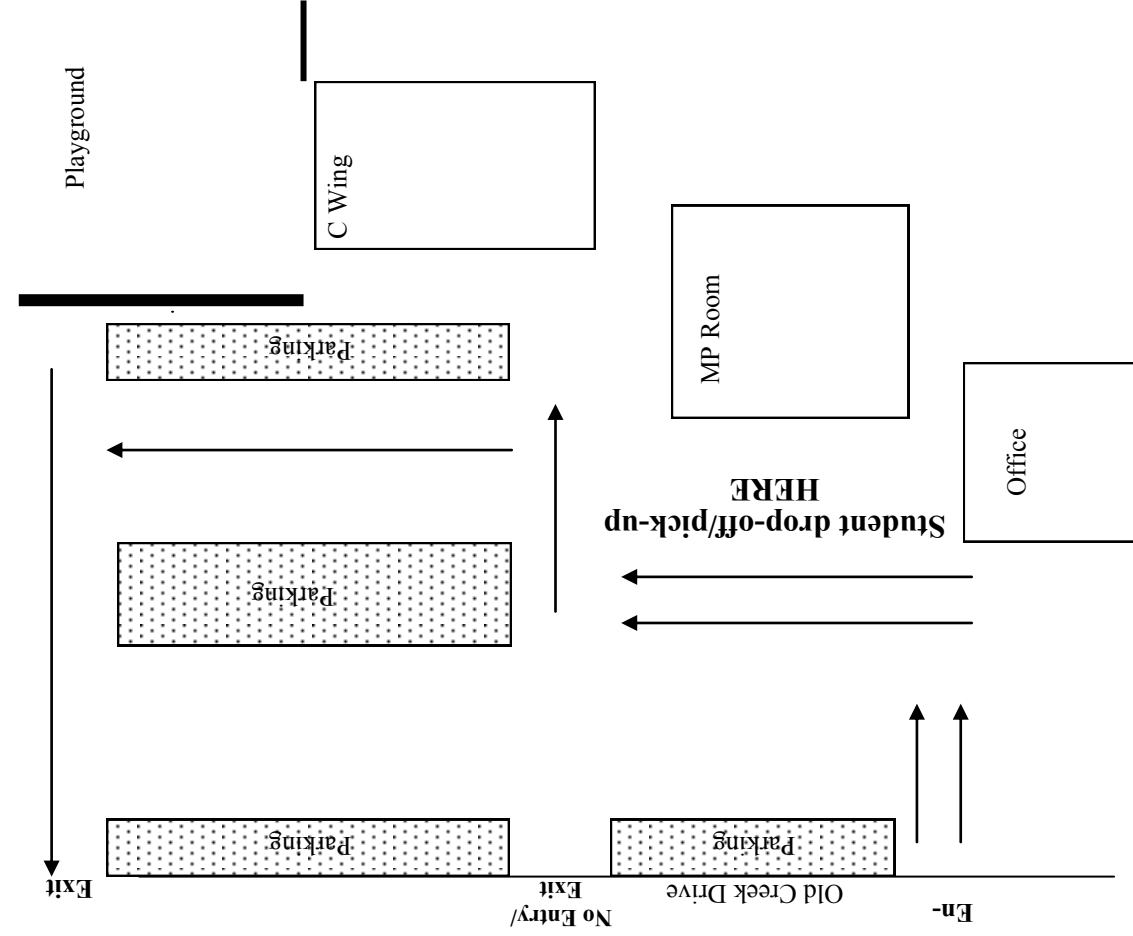
Monday July 20	1st Day of School Tracks B/C/D	7:50 a.m. SHARP! Grades 1-6
Monday July 20	Kindergarten Back to School Night Tracks B/C/D	6 p.m. Kindergarten classrooms
Thursday July 23	Back to School Night Grades 1-6 Tracks B/C/D	General Assembly 5:30-6:00 p.m. Primary and Intermediate Classrooms 6:00-6:40 p.m. AND 6:50-7:30 p.m.
Friday August 14	Minimum Day	Grades 1-6 7:50-12:22 Kindergarten (a.m. and p.m.) 7:50-11:21 a.m.
Monday August 24	Fall Fundraiser Kick-off	Track A
Friday September 18	Burgers and Books	Book Fair "Read Around the World"

Breakfast Program Hours

Parents, please note that doors open for breakfast at 7:25 a.m. and close at 7:45 a.m. Students arriving after the 7:25 opening need to be mindful of their schedule and eat quickly! At 7:50 a.m., our Breakfast Supervisors excuse all students to go directly to their classrooms. Your support in having students arrive in a timely manner is **MOST** appreciated.



John Ehrhardt Elementary Traffic Flow/North



Traffic Flow/09-10

This year there is a **NEW** traffic pattern for the school's parking lot! Please observe this pattern when dropping off or picking up your student(s).

- Enter driveway near MP Room/ Office
- Pull as far forward as possible along drive to drop/pick-up student(s)
- Continue on drive and Exit on the east side of campus, at the stop sign at Old Creek and Bambridge Drives
- Parking is available as indicated on the map

